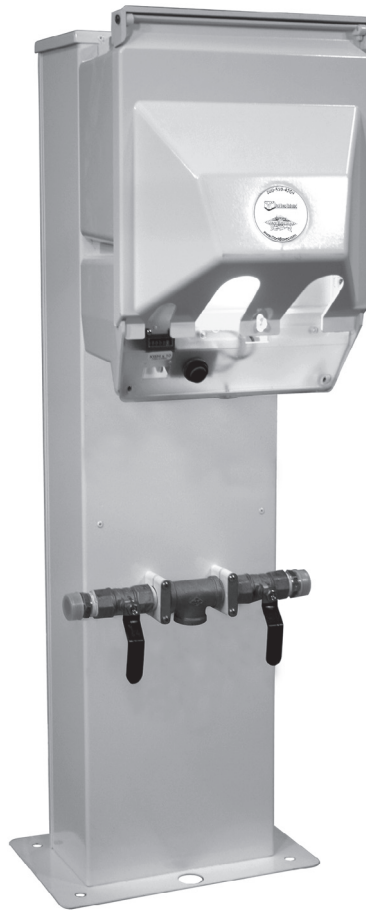




Dock Boxes Unlimited™

Coming together is a beginning. Keeping together is progress. Working together is success.



Installation Instructions for the Newport Harbor Mate with Pedestal (#70-8630)

DANGER



Hazardous voltage. Can cause severe injury or death.

Turn off main power before opening panel.

WARNING

Dock Boxes Unlimited, Inc. strongly recommends that these products be installed by a qualified electrician.

IMPORTANT - INSTALL EQUIPMENT IN CONFORMANCE WITH CODES

This product must be installed in accordance with the National Electric Code (NEC) or the Canadian Electrical Code (CECO) and any applicable local codes. Before installing equipment, check with your local electrical inspector for requirements and information. If you have questions or need assistance, contact a qualified electrician.

WARNING

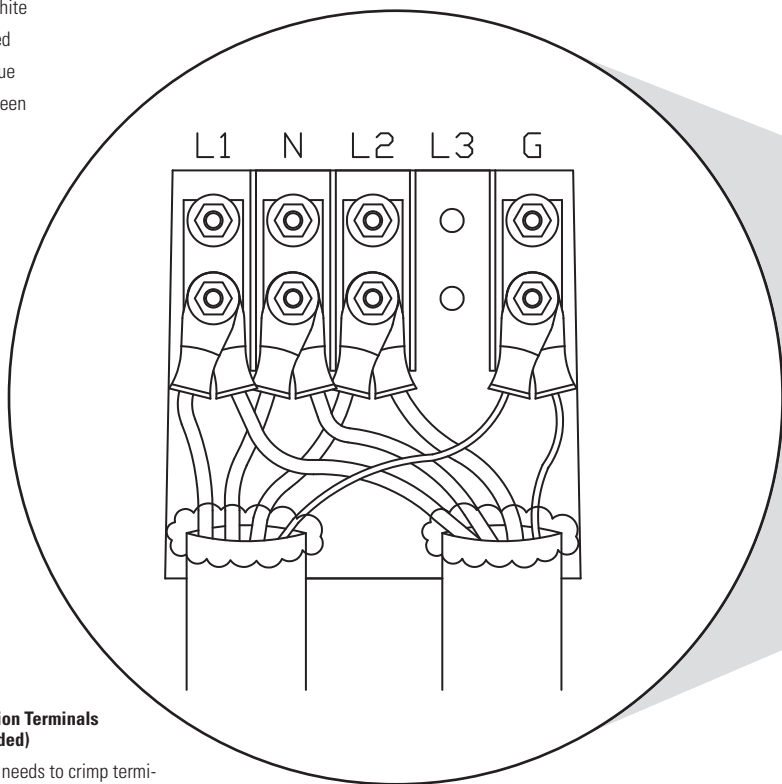
Turn off or disconnect the power supplying this equipment before beginning work.

This may require that you contact your electric utility to disconnect power to an existing load-center. The line side of the main breaker is energized unless power is disconnected upstream. Dock Boxes Unlimited, Inc. will not assume responsibility for property damage or personal injury resulting from misuse of the information in this publication.

Wiring Diagram

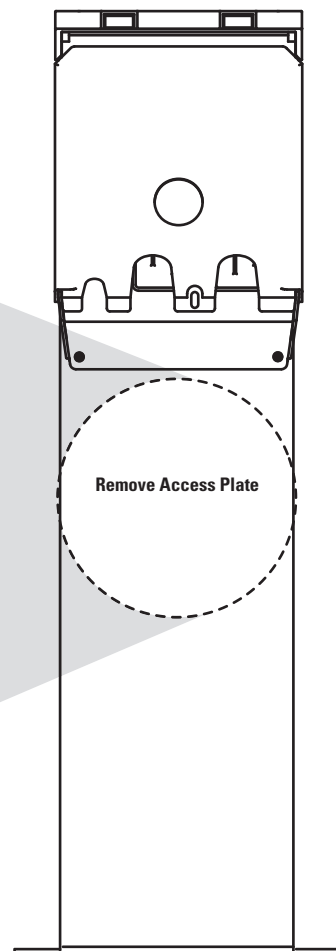
Wire Colors

(Line 1) L1	Black
(Neutral) N	White
(Line 2) L2	Red
(Line 3) L3	Blue
(Ground) G	Green



Compression Terminals (Not Included)

Contractor needs to crimp terminals to line wires and place on provided stud lug connector.



Installation

! Note

We strongly recommend that a qualified electrical contractor install this unit.

1 Mounting the Unit

! Note

Always use stainless steel mounting hardware.

The four corner 5/8" holes in the bottom of the pedestal base allows for securing the pedestal to a surface with lag screws, expansion bolts, or threaded studs. Conduit should be run through the center of the concrete, sufficient for electrical, water, phone, and cable TV.

2 Connecting Power Supply to the Buss Bars on the Newport Pedestal

Remove the screws on the backside of the pedestal and remove the back cover to expose the buss bars. Connect to buss bars following the wire instructions (i.e. Line 1, Line 2, neutral, and ground). Reinstall the cover and screws.

3 Phone/Cable TV Access

To access the backside of the phone/cable TV outlets, remove the three screws at the top of the amber lens (if not already completed) and the two screws in the two top corners of the breaker/phone/TV faceplate. Lift the receptacle plate up and forward to access the back of the phone/cable TV outlets. Connect the phone and cable TV outlets, place the

faceplate back into position, and secure it with the five screws.

4 Replacing the 13-Watt Compact Fluorescent Light

To install or replace a bulb, remove the two screws from the plate in the amber lens that is located in the top right part of the amber lens. This is directly over the bulb position in the unit. Remove the old bulb and insert a new bulb. Reinstall the lens cover and screws.

Maintenance

Dock Boxes Unlimited, Inc. produces units that are designed to withstand the harsh marine environment. Very little maintenance is required to keep the units looking new for many years and to keep the warranty effective.

1 Exterior Maintenance

To remove of dirt, grime, and bird droppings, use a mild solution of dishwashing detergent at approximately one teaspoon per gallon of warm water. Once clean, follow up with a water based insect spray to kill the spiders around the base and main housing of the unit. DO NOT use a petroleum based insect spray.

DO NOT use any solvent or corrosion inhibiting products on any part of the unit. This can cause serious stress cracking of the engineered resins and will void warranty.

2 Interior Maintenance

Before attempting the following maintenance procedures, turn off the power to the unit at the power supply panel.

! Note

The breakers on the unit DO NOT turn the unit power supply off and the buss bars will be energized.

• Exposing the Buss Bar Assembly

Annually, remove the light assembly at the bottom of the unit to expose the buss bars.

• Maintenance of Buss Bar Assembly

On all units, the buss bars should be visually examined for excessive heating. If potentially faulty or loose joints are found, they should be tightened or replaced.

In the cases where mechanical lugs instead of the stud-lug buss assembly are used, it is very important that they be examined closely. Most mechanical lugs are made of aluminum and are very susceptible to galvanic corrosion.

If the set screw cannot be tightened, replace the lug. If there appears to be corrosion around the copper to aluminum connection, remove the copper wire and clean the wire, coat the wire with an anti-corrosion grease, and retighten the assembly.

• Receptacles and Breakers

The receptacles and breakers should be examined annually, and if any sign of heating is evident, the receptacles or breakers should be replaced.

• Solvents

DO NOT spray any solvents on the electrical components. Solvents will cause stress cracking of the polymeric materials and will void warranty.

3 Lighting Assembly

To test the lighting assembly, the photocell should be covered with a piece of black tape and in about 2-3 minutes the light should illuminate. If this does not occur, the following items should be checked: photocell and bulb.

4 Winterizing

The water system should be purged with air and each ball valve should be opened and closed after the system has been drained. This will remove the slug of water that remains in the ball. No other winterizing functions are required.

Operation

1 Connect Power Cord to Boat

Insert the proper end of the shore power cord into the boat's power inlet connection, twist the plug to lock, then tighten the locking plug retainer by twisting the large nut until the unit is tight to the boat.

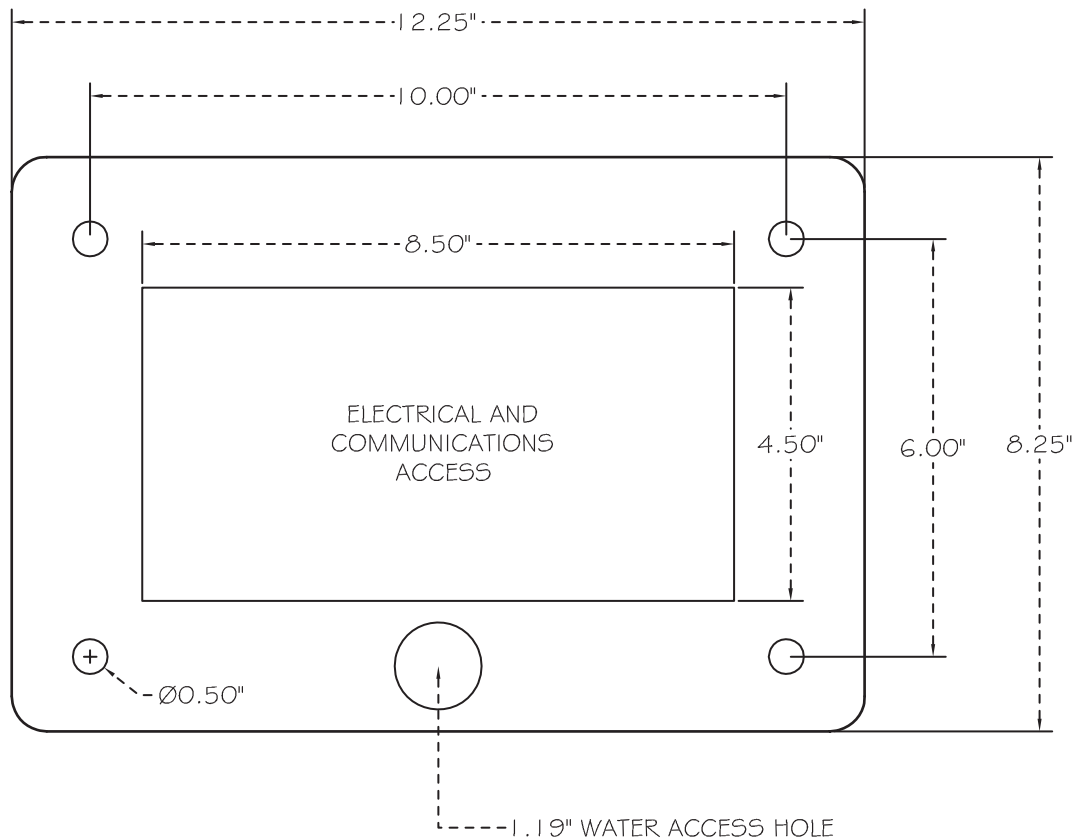
2 Connect Power Cord to Pedestal

With the breakers off, insert the shore power cord into the receptacle and twist the plug clockwise until the plug locks into the receptacle.

3 Turn Breaker ON

With both connections secured, turn on the breaker. The power indicator on the boat should indicate a successful attachment of the plug and the receptacle.

Base Diagram



Parts

Save 10% When You Buy Parts and Pedestals Online!

Please visit www.dockboxes.com for a full parts listing.

To request a parts handbook:

- Call 1-800-559-4269 or
- E-mail sales1@ultimatemarinesource.com

Warranty Policy

Dock Boxes Unlimited, Inc. ("Seller") Warranty Policy Supplement to Seller's Selling Policy 25-000.

This Warranty Policy is intended to only supplement and/or alter the "Warranty" provision of Seller's Selling Policy 25-000. All other terms and conditions contained in the Selling Policy 25-000 remain in full force and effect.

Warranty for Pedestals and Distribution Equipment Housings for Dock Boxes Unlimited, Inc. Products

Seller warrants that the housings of all Pedestals and Distribution Equipment manufactured by it ("Housings") will conform to Seller's applicable specifications and be free from failure due to defects in workmanship and material for the lifetime of the Product.

In the event the Housing fails to comply with the foregoing warranty Seller will, at its option, either (a) repair or replace the defective Housing, or defective part or component thereof, F.O.B. Seller's facility freight prepaid, or (b) credit Buyer for the purchase price of the Product. All warranty claims for Housings

shall be made in writing. Seller requires all non-conforming Products be returned at Seller's expense for evaluation unless specifically stated otherwise in writing by Seller.

This warranty does not cover failure or damage due to storage, installation, operation or maintenance not in conformance with Seller's recommendations and industry standard practice or due to accident, misuse, abuse or negligence. This warranty does not cover reimbursement for labor, gaining access, removal, installation, temporary power or any other expenses, which may be incurred in connection with repair or replacement.

This warranty does not apply to equipment not manufactured by Seller. Seller limits itself to extending the same warranty it receives from the supplier.

Warranty for Internal Components for Dock Boxes Unlimited, Inc. Products

Eaton-Marina Power & Lighting internal component products are covered under the warranty set forth in Seller's Selling Policy 25-000.

Warranty for Meters for Dock Boxes Unlimited, Inc. Products

Seller warrants that the meters manufactured by it ("Meters") will conform to Seller's applicable specifications and be free from failure due to defects in workmanship and material for five (5) years.

In the event a Meter fails to comply with the foregoing warranty Seller will, at its option, either (a) repair or replace the defective Meter, or defective part or component thereof, F.O.B. Seller's facility freight prepaid, or (b) credit Buyer for the purchase price of the

Product. All warranty claims for Meters shall be made in writing. Seller requires all non-conforming Products be returned at Seller's expense for evaluation unless specifically stated otherwise in writing by Seller.

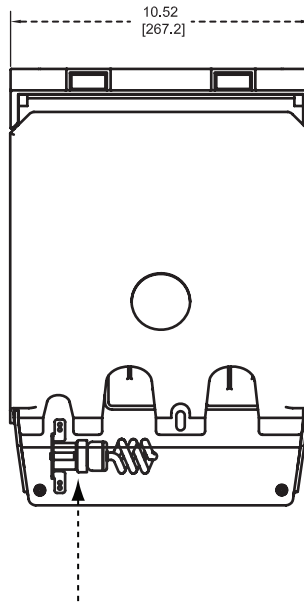
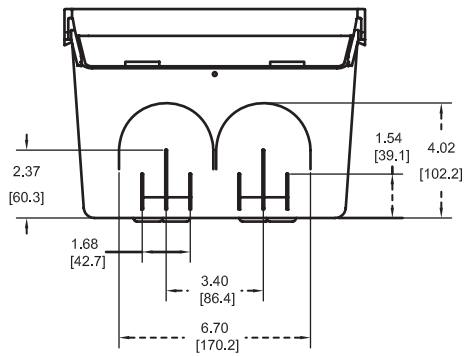
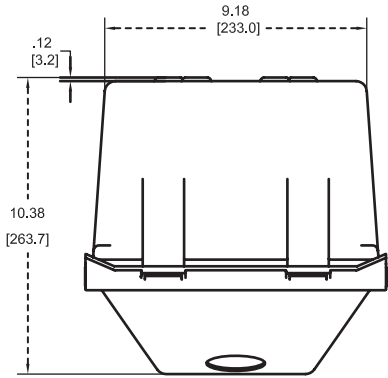
This warranty does not cover failure or damage due to storage, installation, operation or maintenance not in conformance with Seller's recommendations and industry standard practice or due to accident, misuse, abuse or negligence. This warranty does not cover reimbursement for labor, gaining access, removal, installation, temporary power or any other expenses, which may be incurred in connection with repair or replacement. This Warranty is void if factory seal is broken.

This warranty does not cover wire harnesses, Current Transformers (CTs) and counters. These components are covered under selling policy 25-000.

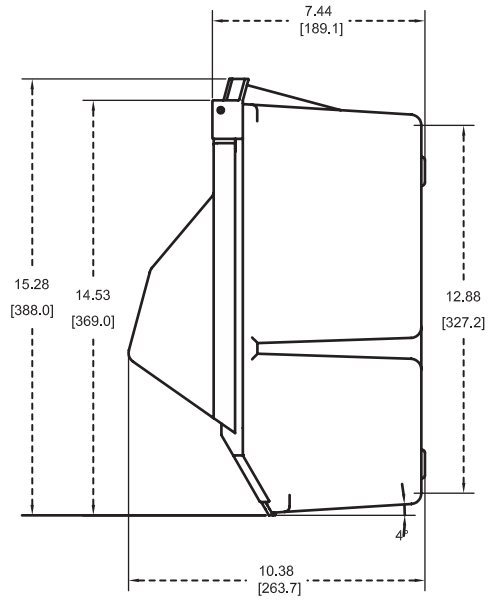
This warranty does not apply to equipment not manufactured by Seller. Seller limits itself to extending the same warranty it receives from the supplier.

Dock Boxes Unlimited, Inc.
5605 North MacArthur Blvd., Ste 200
Irving, TX 75038-2630
United States
1-800-559-4269
fax: 972-402-9995
www.dockboxes.com
sales1@ultimatemarinesource.com

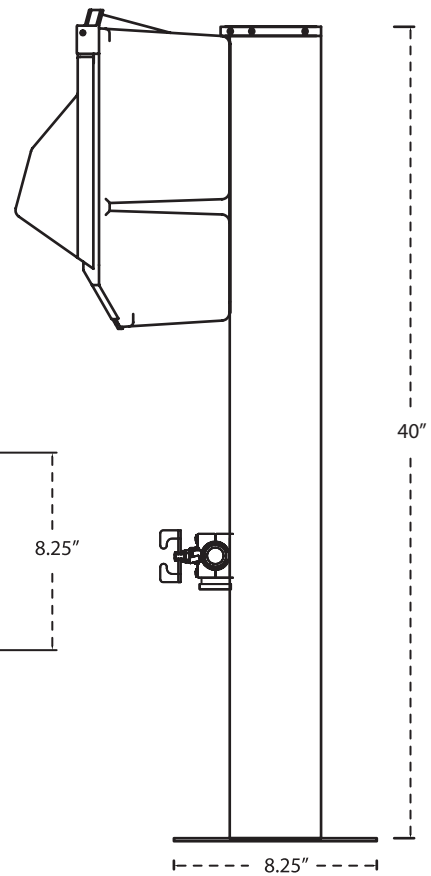
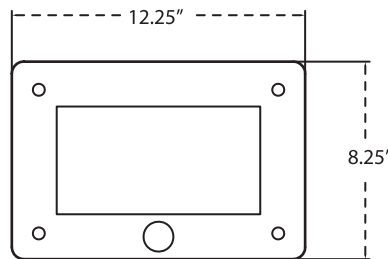
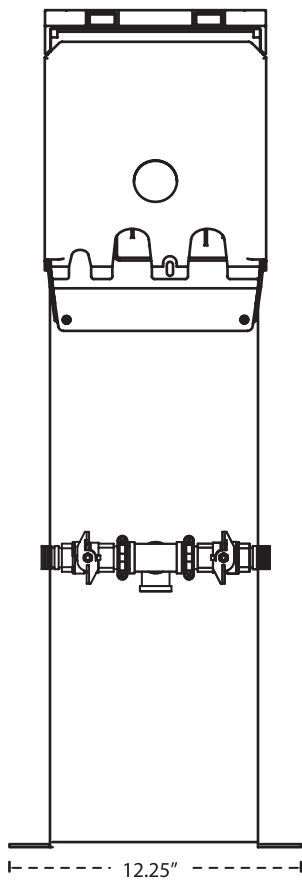
Dimensions



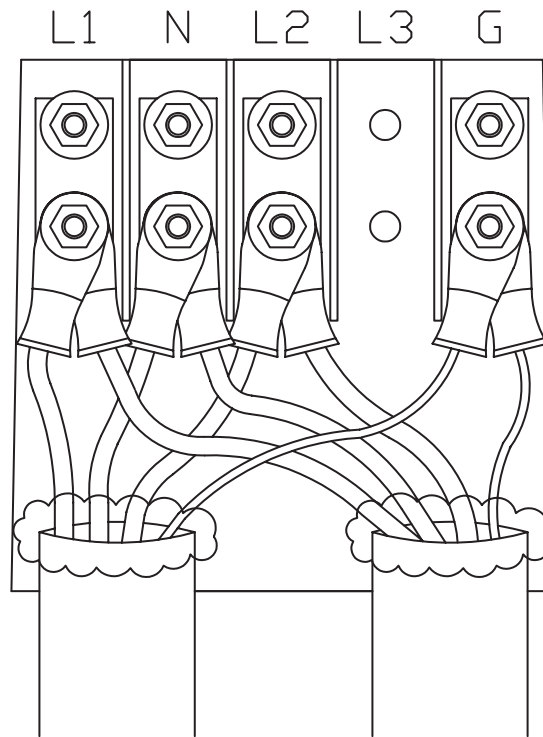
Lighting Assembly Under Removable Cover



Stand Dimensions



Buss Bar Assembly



Telephone and Cable TV Assembly

